

Your nearest SKYHIGH dealer



SKYHIGH

Sky High Lift B.V.

Braken 51, 1713GC, Obdam, The Netherlands • ✉ sales@skyhighlift.com • 🌐 www.skyhighlift.com

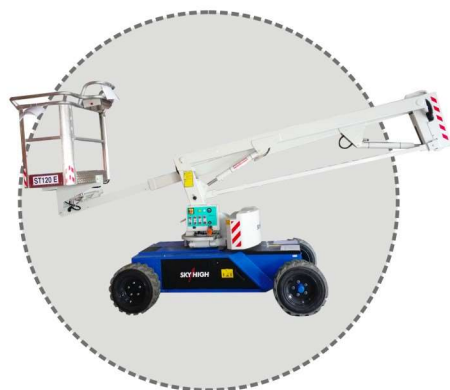


SKYHIGH

ELECTRIC ARTICULATING BOOMS



ST100



ST120



ST130

Compactness and lightness

All models are compact and light. With the stowed height of 2 meters, it can easily access all industrial buildings. Equipped with off road tires or non-marking tires, they offer very small ground pressure feature and can easily travel over on soft ground, the floor of commercial building and industrial buildings. A tight turning radius with zero tailswing is guaranteed by their compact design. It is easy to maneuver through narrow aisles and standard doors. Also, Our Sky High models are easy to be transported on small trailers.



Environment

Our products are absolutely environmentally acceptable. They are extremely silent during lifting, lowering, rotating, driving and telescoping. The hydraulic oil is biodegradable, this in accordance with the normalised test CEC-L-33-T82 (BIOFLUID S), and has also a high viscosity allowing very high fluctuations of temperature. An important advantage is for inside-use.(shopping centers, airports,...etc.)

Reliable driving system

The electro-hydraulic drive is mounted on the left-hand drawer of the chassis. A translucent oil reservoir is connected to the electro hydraulic pump 7cc 48 V DC 5000 W. This unit is controlled by a high efficiency MOSFET Drive 450A which is completely shielded and is mounted in front of the electromotor.

The electronic Mosfet control provides exactly the right energy needed for every movement. This prolongs the life of the batteries, which are located in the right drawer. In the long run this will help reducing costs considerably. The steering also ensures that both the electromotor and the hydraulic parts are not always loaded to their maximum.





Safety and reliability

The platforms are equipped with safety protections that comply with European safety directions:

- ♦ Tilt alarm with automatic shutdown of driving functions with audio alarm when the aerial platform with raised arms is more than 4.5 ° out of level.
- ♦ Automatic switch off of driving functions when overloading
- ♦ Automatic switch-over to safety speed when driving with raised platform.
- ♦ Battery indicator with visible alarm which blocks the lifting functions when batteries are low.
- ♦ Safety valves keeping the working basket perfectly horizontal in all positions
- ♦ Hand-operated emergency descent and rotation system.
- ♦ Emergency and main switch on both the ground control station and the platform control console
- ♦ Standard hand-pump to activate the functions in case of emergency.
- ♦ Hydraulic over pressure protection.

The arms are operated by two cylinders with bi-directional ball valve. This valve remains completely sealed in case of hose failure or pressure loss, as a result of which the booms cannot drop. The ground and platform control consoles have been fitted with an emergency valve which can easily be operated by hand.



Comfort on the working platform

The standard aluminum basket is extremely light (27kg) and has an optimum protection against weather influences, chemical products and especially oxidation. An attachment plate with two connection points for safety belts is located at floor level in the working basket.

The ribbed platform plate has an efficient drainage. With a platform capacity of 215 kg, the spacious basket offers room for two persons.



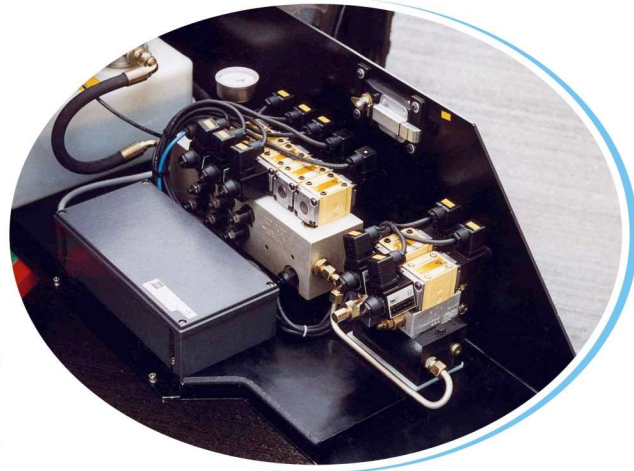
Self-supporting chassis

The machines have a self-supporting chassis with a built-in rear-wheel drive and a built-in front-wheel steering. On the sides of the chassis there are two drawers opening 90°, making the batteries, the hydraulic and electrical components readily accessible. These drawers can be closed with a key. The chassis has four crane hooks, two in front and two in the rear.



Easy maintenance

Our machines can be serviced very easily and needs little maintenance. All metal parts of the platform have been treated against corrosion and rust. Each component has been sandblasted and is covered with 3 layers of zinciferous paint. All pivots of the booms are free of maintenance and have plastic bearings. The operating cables and the hydraulic pipes are fitted in the chassis and the booms to provide an optimum protection.



Simple operation

The machines can be operated both from the ground and the working basket, except for driving, which for safety's sake is only possible from the basket. A keyed selector switch allows you to choose between operation from the ground or platform. The main emergency switch and also all push buttons have an IP 65 protection against weather influences.

Operating the platforms is simple and doesn't demand a special training :

- ◆ Emergency and main switch.
- ◆ A platform /ground keyed selector switch.
- ◆ Separate push buttons for lifting and lowering each boom.
- ◆ Two push buttons for left and right rotation.
- ◆ Two push buttons for extension and retraction. (for ST120 / 130)
- ◆ Two-keyed push buttons for an independent leveling of the basket. (for ST120 / 130)
- ◆ A joystick for forward and backward driving.
- ◆ Platform and ground emergency switch.

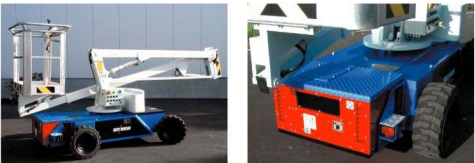




Ideal solution to carry out a safe and efficient work, indoors or outdoors.

The SKY-HIGH articulating booms are top-notch self-propelled lifts even with telescopic upper boom for the models ST120 and ST130. With 35% gradeability, they are very suitable for the work on rough terrain and can easily travel over irregular ground. The extremely compact dimension allows the devices to be used close to or even in very narrow spaces. Drive through standard doorways, work close to buildings or around obstacles, and access overhead work from aisles and other congested areas, all of these are no problems. You can safely and efficiently carry out your maintenance operations indoor or outdoor. Working heights range from 10m to 13m.

SKY-HIGH aerial platforms have been constructed in accordance with the European regulation for machinery CE 89/392, art.8, subsection 2, modified by directive CE 93/68, as well as the directive for electrical equipment design for use within certain voltage CE 73/23 and the electromagnetic compatibility EMC 89/336 EC.



SPECIFICATIONS	ST100
Max. working height	10.00m
Max. platform height	8.00m
Max. horizontal outreach	4.50m
Max.tolerable inclination	4.5°
Max.driving speed-closed	6km/h
Max.drive speed-open	< 1 km/h
Max.Lifting capacity	215 kg
Transport length	4.65m
Transport width	1.50m
Transport height	2.0m
Platform size	1.1x0.67x1.1m
Total weight	2200kg
Turntable rotation	420°
Batteries	48V-240AH
Battery charger	48V-1200W IP66
Electric motor	48VDC 5000W
Gradeability	35%
Turning Radius-outside	3.25m
Turning Radius-inside	1.75m
Ground clearance	0.15m
Up and over height	4.50m
Max. operating pressure	220bar
Capacity-hydraulic tank	20L
wheelbase	1.80m
Tires	23x8.5-12

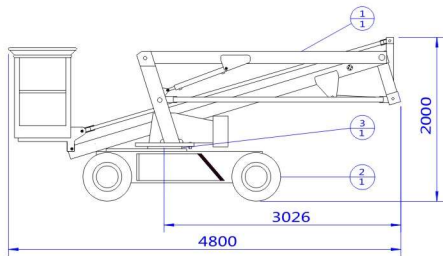
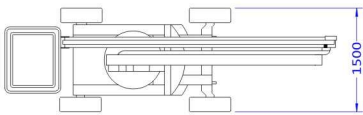
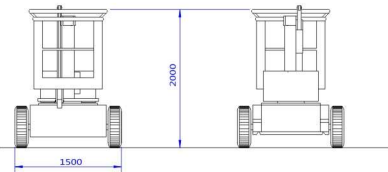
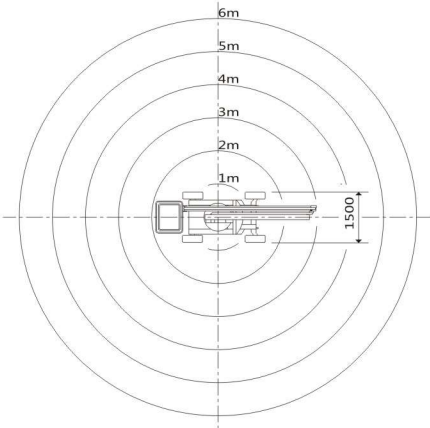
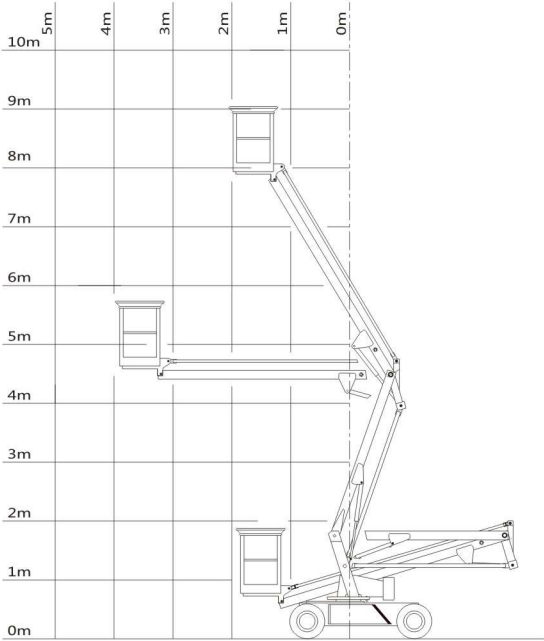
*Changes may occur as a result of a continuous innovation of our products without notice.

OPTIONS

- ◆ Polyester working basket
- ◆ Hour meter
- ◆ Petrol or diesel
- ◆ Flashing beacon
- ◆ 220V supply on platform

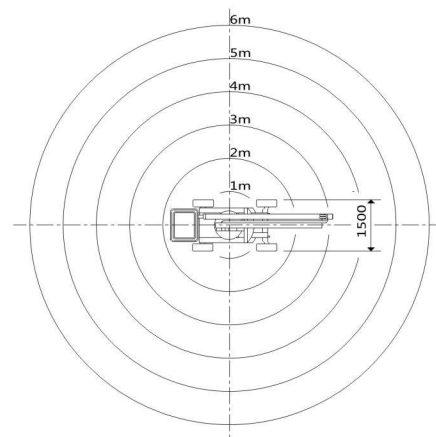
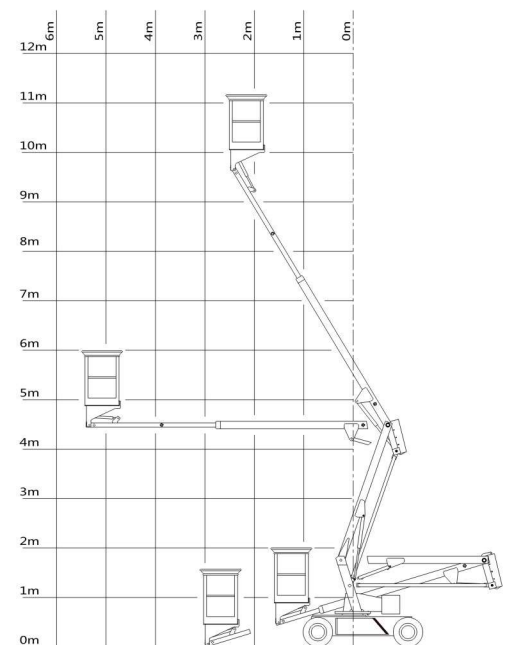
SPECIAL VERSION

- For rough terrain: equipped with double width tires
- Explosion proof: safety method Eex d, e IIB T4
- Thermal motor: petrol or diesel
- Trailer mounted version
- Rail mounted version





SPECIFICATIONS	ST120
Max. working height	12.00m
Max. platform height	10.00m
Max. horizontal outreach	6.00m
Max.tolerable inclination	4.5°
Max.driving speed-closed	6km/h
Max.drive speed-open	< 1 km/h
Max.Lifting capacity	215 kg
Transport length	4.65m
Transport width	1.50m
Transport height	2.0m
Platform size	1.1x0.67x1.1m
Total weight	2850 kg
Turntable rotation	420°
Batteries	48V-240AH
Battery charger	48V-1200W IP66
Electric motor	48VDC 5000W
Gradeability	35%
Turning Radius-outside	3.25m
Turning Radius-inside	1.75m
Ground clearance	0.15m
Up and over height	4.50m
Max. operating pressure	220bar
Capacity-hydraulic tank	20L
wheelbase	1.80m
Ties	23x8.5-12



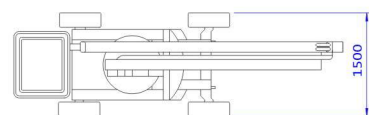
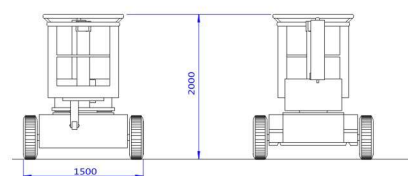
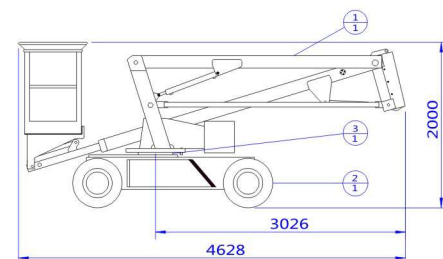
*Changes may occur as a result of a continuous innovation of our products without notice.

OPTIONS

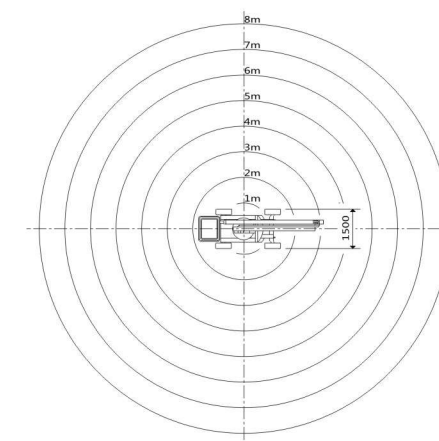
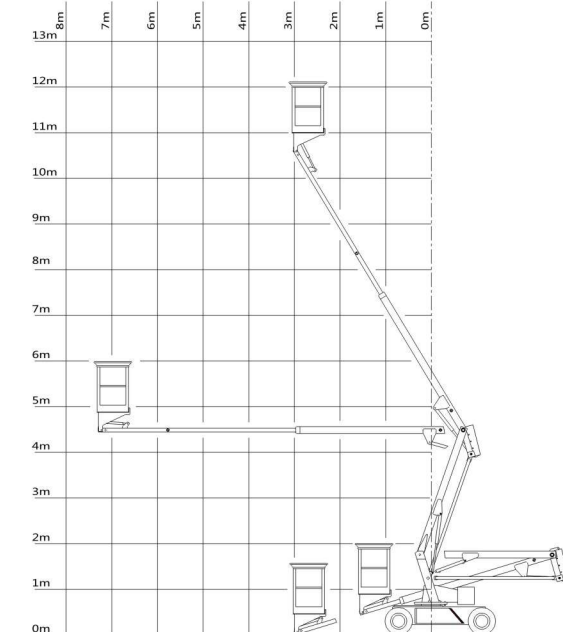
- ◆ Polyester working basket
- ◆ Hour meter
- ◆ Petrol or diesel
- ◆ Flashing beacon
- ◆ 220V supply on platform

SPECIAL VERSION

- For rough terrain: equipped with double width tires
- Explosion proof: safety method Eex d, e IIB T4
- Thermal motor: petrol or diesel
- Trailer mounted version
- Rail mounted version



SPECIFICATIONS	ST130
Max. working height	13.00m
Max. platform height	11.00m
Max. horizontal outreach	6.70m
Max.tolerable inclination	4.5°
Max.driving speed-closed	6km/h
Max.drive speed-open	< 1 km/h
Max.Lifting capacity	215 kg
Transport length	4.88m
Transport width	1.50m
Transport height	2.1m
Platform size	1.1x0.67x1.1m
Total weight	2900 kg
Turntable rotation	420°
Batteries	48V-240AH
Battery charger	48V-1200W IP66
Electric motor	48VDC 5000W
Gradeability	35%
Turning Radius-outside	3.25m
Turning Radius-inside	1.75m
Ground clearance	0.15m
Up and over height	4.50m
Max. operating pressure	220bar
Capacity-hydraulic tank	20L
wheelbase	1.80m
Ties	23x8.5-12



*Changes may occur as a result of a continuous innovation of our products without notice.

OPTIONS

- ◆ Polyester working basket
- ◆ Hour meter
- ◆ Petrol or diesel
- ◆ Flashing beacon
- ◆ 220V supply on platform

SPECIAL VERSION

- For rough terrain: equipped with double width tires
- Explosion proof: safety method Eex d, e IIB T4
- Thermal motor: petrol or diesel
- Trailer mounted version
- Rail mounted version

